

PoliDent

CASTING CAD/CAM disc

Is used for milling castable frameworks for metal casting and pressed ceramic

Characteristics:	Produced of 100% organic material that burns-out without any residual ash.
Shapes:	SHOULDER - diameter 98,5 mm ZZ - diameter 95 mm AG - diameter 100 mm
Thickness:	12, 15, 18, 20, 25, 30 mm
Intended use:	milling frameworks for casting, milling of crowns, bridges and castable layers for press ceramic, verifying frameworks on plaster model before final ZrO ₂ milling (especially recommended for larger ZrO ₂ frameworks)
Colors:	clear



PoliDent

MODEL CAD/CAM disc

Suitable for milling dental models

Characteristics:	This is a special, highly-compressed material with exceptional abrasion resistance. The model doesn't absorb liquids so it is recommended for ceramic layering. Nevertheless, it has excellent milling ability. Available in two densities.
Shapes:	SHOULDER - diameter 98,5 mm ZZ - diameter 95 mm AG - diameter 100 mm
Thickness:	25 mm
Intended use:	Milling of stumps/ dies, working models and antagonists. Digital models are CAD designed from 3D data acquired with a wide range of digital impression-taking solutions.
Colors:	brown - beige

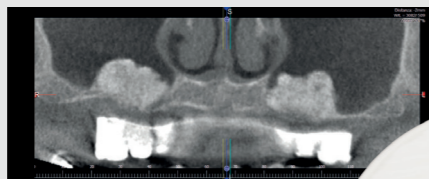


PoliDent

X-RAY CAD/CAM disc

X-ray visible disc used for milling diagnostic stents for implant planning

Characteristics:	Contains X- ray visible powder. Homogeneous mix ensures best visibility. Prevents light scattering.
Shapes:	SHOULDER - diameter 98,5 mm ZZ - diameter 95 mm AG - diameter 100 mm
Thickness:	12, 14, 15, 16, 18, 20, 25 mm
Intended use:	allows visibility of teeth setup in the X-ray CAT scan for implant planning and determination



USE FOR: PMMA DISCS	art.nr.	head dia. mm	shank dia. mm	overall length mm	use for
AMANN GIRRBACH	15724	1.0	3.0	47	PMMA
	15725	2.5	3.0	47	PMMA
	15726	0.6	3.0	47	PMMA
IMES ICORE	15727	1.0	3.0	48	PMMA
	15728	2.5	3.0	48	PMMA
VHF	15729	0.6	3.0	48	PMMA
	15730	1.0	3.0	35	PMMA
	15731	2.0	3.0	35	PMMA
ZIRKONZAHN	15732	0.6	3.0	35	PMMA
	15733	1.0	3.0	50	PMMA
	15734	2.0	3.0	50	PMMA
ROLAND	15735	0.5	3.0	50	PMMA
	15744	2.0	4.0	50	PMMA
	15745	1.0	4.0	50	PMMA
	15746	0.6	4.0	50	PMMA

USE FOR: ZIRCONIA DISCS	art.nr.	head dia. mm	shank dia. mm	overall length mm	use for
AMANN GIRRBACH	15700	1.0	3.0	48	Zr
	15701	2.5	3.0	48	Zr
	15702	0.6	3.0	48	Zr
IMES ICORE	15703	1.0	3.0	48	Zr
	15704	2.5	3.0	48	Zr
VHF	15705	0.6	3.0	48	Zr
	15706	1.0	3.0	35	Zr
	15707	2.0	3.0	35	Zr
ZIRKONZAHN	15708	0.6	3.0	35	Zr
	15709	1.0	3.0	57	Zr
	15710	2.0	3.0	57	Zr
ROLAND	15711	0.5	3.0	57	Zr
	15736	2.0	4.0	50	Zr
	15737	1.0	4.0	50	Zr
	15738	0.6	4.0	50	Zr
	15739	0.3	4.0	50	Zr

USE FOR: ZIRCONIA DISCS diamond coated	art.nr.	head dia. mm	shank dia. mm	overall length mm	use for
AMANN GIRRBACH	15712	1.0	3.0	48	Zr - with diamond
	15713	2.5	3.0	48	Zr - with diamond
	15714	0.6	3.0	48	Zr - with diamond
IMES ICORE	15715	1.0	3.0	48	Zr - with diamond
	15716	2.5	3.0	48	Zr - with diamond
VHF	15717	0.6	3.0	48	Zr - with diamond
	15718	1.0	3.0	40	Zr - with diamond
	15719	2.0	3.0	40	Zr - with diamond
ZIRKONZAHN	15720	0.6	3.0	40	Zr - with diamond
	15721	1.0	3.0	57	Zr - with diamond
	15722	2.0	3.0	57	Zr - with diamond
ROLAND	15723	0.5	3.0	57	Zr - with diamond
	15740	2.0	4.0	50	Zr - with diamond
	15741	1.0	4.0	50	Zr - with diamond
	15742	0,6	4.0	50	Zr - with diamond
	15743	0,3	4.0	50	Zr - with diamond

PoliDent

poliCUTTER milling tools



PoliDent d.o.o. Dental Products Industry, Volčja Draga 42, 5293 Volčja Draga, Slovenija, Tel: + 386 5 330 48 40 polident@polident.si, www.polident.si



www.polident.si

Date: 20.12.2024

PoliDent



Creating smiles since 1958

CAD/CAM discs

PoliDent

PMMA CAD/CAM disc

is suitable for:

- milling of long-term temporary crowns and bridges, and for milling and verifying the appliance on the plaster model/mouth before the final ZrO₂ milling process;
- milling the removable occlusal splint, and
- milling of individual denture teeth, full arch and tooth segments for denture manufacturing.

Clear discs are also suitable for fabrication of molds in precision casting with metal or press ceramics (non-medical use).

	Specification	Typical average value	Method according to
Characteristics:	Flexural strength	> 65 MPa // > 50 MPa	90 MPa // 120 MPa EN ISO 20795-2 // EN ISO 10477
	Flexural modulus	> 2000 MPa	2700 MPa EN ISO 20795-2
	Sorption	< 32 µg/mm ³	25 µg/mm ³ EN ISO 20795-2
	Solubility	< 1,6 µg/mm ³	0,6 µg/mm ³ EN ISO 20795-2
	Residual monomer	< 2,2 %	0,5 % EN ISO 20795-1 / EN ISO 20795-2
	Vickers hardness	> 24 HV	26 HV /

SHOULDER - diameter 98,5 mm

Shapes: ZZ - diameter 95 mm

AG - diameter 100 mm

Thickness: 12, 14, 15, 16, 18, 20, 25, 30, 35 mm

BL1 - BL2 - BL3 - A1 - A2 - A3 - A3,5 - B1 - B2 - B3 - C2 - D2

Colors: enamel colours: E1 - E2

CLEAR - BERRY - BLUE - GREEN - ORANGE

Registered in the USA with the intended purpose:

- for milling of long-term temporary crowns and bridges, and for milling and verifying the appliance on the plaster model/mouth before the final ZrO₂ milling process, and
- for milling of individual denture teeth, full arch and tooth segments to manufacture denture.

Licensed by Health Canada with the intended purpose:

- for milling of short-term temporary crowns and bridges, and for milling and verifying the appliance on the plaster model/mouth before the final ZrO₂ milling process.



PoliDent

PMMA CAD/CAM disc multilayer

Multilayer variant of PoliDent PMMA CAD/CAM disc is composed by several layers of transient colors. The layering concept is optimized to match the natural color gradient of natural teeth. The final result is a highly aesthetic and economical restoration.

SHOULDER - diameter 98,5 mm

Shapes: ZZ - diameter 95 mm

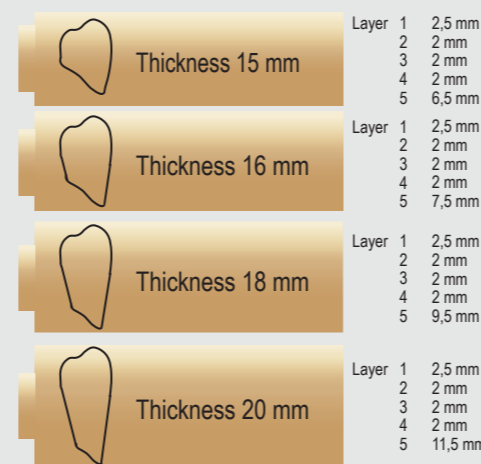
AG - diameter 100 mm

Thickness: 15, 16, 18, 20 mm

Colors: BL2 - BL3 - A1 - A2 - A3 - A3,5 - A4 - B1 - B2 - B3 - B4

C1 - C2 - C3 - C4 - D2 - D3 - D4

Multilayer discs match the natural tooth colour transitions and are therefore perfect for aesthetic temporary crowns and bridges and also a suitable solution for milling denture teeth.

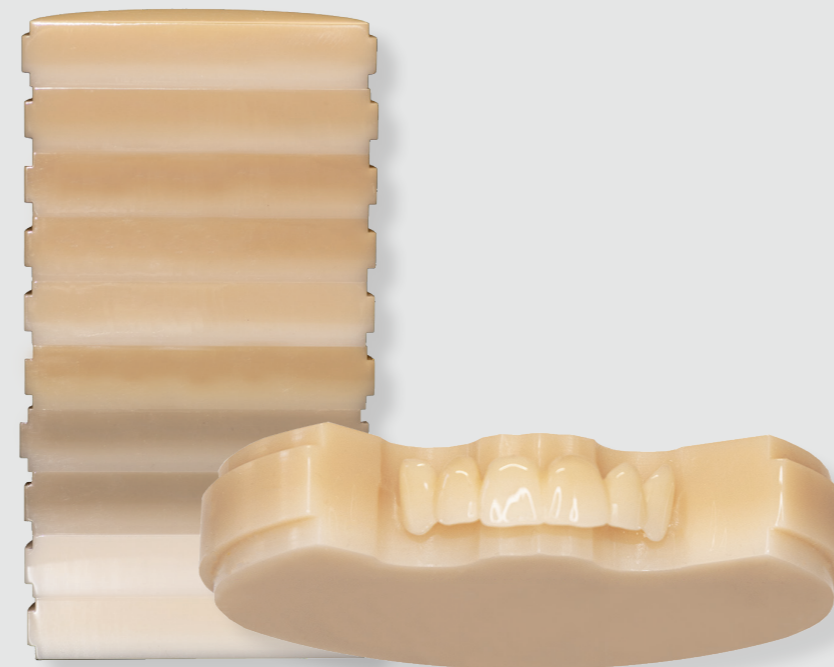


The advantage of ML discs is the unnoticeable transition from the dark neck colour to the bright enamel colour.

This is performed with our five layers coloring technique. Natural looking aesthetic is achieved.

More natural looking translucency compared to other dental materials.

Good bonding to denture bases and other PMMA materials.



PoliDent

PINK CAD/CAM disc

Pink CAD/CAM disc is suitable for milling full and partial dentures and temporary immediate load implant supported dentures.

	Specification	Typical average value	Method according to
Characteristics:	Flexural strength	> 65 MPa	90 MPa EN ISO 20795-1
	Flexural modulus	> 2000 MPa	2700 MPa EN ISO 20795-1
	Sorption	< 32 µg/mm ³	25 µg/mm ³ EN ISO 20795-1
	Solubility	< 1,6 µg/mm ³	0,6 µg/mm ³ EN ISO 20795-1
	Residual monomer	< 2,2 %	0,5 % EN ISO 20795-1

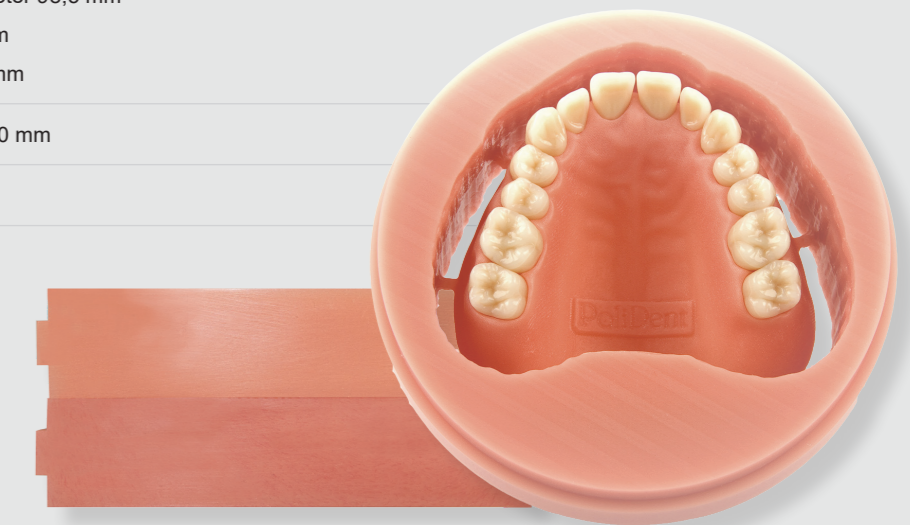
SHOULDER - diameter 98,5 mm

Shapes: ZZ - diameter 95 mm

AG - diameter 100 mm

Thickness: 20, 25, 27, 30, 35, 40 mm

Colors: pink, pink veined



PoliDent

PINK CAD/CAM disc multilayer

Multilayer variant of PoliDent PINK CAD/CAM DISC is composed by several layers of transient colors. The layering concept is optimized to match the natural color gradient of gingiva. The final result is a highly aesthetic and economical restoration.

Shapes: SHOULDER - diameter 98,5 mm

Thickness: 20 mm

Colors: G71 - G74

Perfect solution for milled dentures with more natural appearance.

