



PoliDent



Creating smiles since 1958

PRODUCTS CATALOG



	ABOUT POLIDENT	06
1.	ARTIFICIAL POLYMER TEETH	09
1.1	REF-LINE	10
1.2	PRIMODENT	14
1.3	CROSS LINKED 2	15
2.	CAD/CAM DISCS & ACCESSORIES	17
2.1	PMMA CAD/CAM DISC monocolor, multilayer	18
2.2	PINK CAD/CAM DISC monocolor, multilayer	19
2.3	CASTING CAD/CAM DISC	20
2.4	MODEL CAD/CAM DISC	20
2.5	X-RAY CAD/CAM DISC	20
2.6	ZIR-LINE	21
	Zir-Line ML HS disc	21
	Zir-Line ML disc	21
	Zir-Line ML Hybrid disc	22
	Zir-Line W disc	22
2.7	POLICUTTER MILLING TOOLS	23
	for PMMA CAD/CAM discs	23
	for ZIRCONIA discs	23
	for ZIRCONIA discs - diamond coated	23
3.	3D PRINTING RESIN	25
3.1	poli3Dent MODEL pro	26
3.2	poli3Dent CAST	26
3.3	poli3Dent CLEANER	27
4.	LABORATORY MATERIAL	29
4.1	ACRYLICS	30
	Polihot	30
	Policold	30
	K-30S	31
	Polirepar S	31
	Ortopoli	32
	Politemp	32
	Politray	32
	Unitray LC	33

4.2	PUMICE	33
4.3	BRUSHES	33
4.4	INVESTMENT MATERIALS	34
	Polivest	34
	Politerm Speed	34
	Polipress	34
	Univecast	35
4.5	CORUNDUM	35
4.6	DENTAL PLASTERS	36
	Alabaster	36
	Polidur	36
	Polistone	37
	PrimaArt	37
	PrimaRock	37
4.7	SILICONES	37

5. DENTAL PRACTICE MATERIAL 38

5.1	DISPOSABLE PRODUCTS	39
	Protective medical gloves	39
	Protective medical Apron	39

6. OTHER SELLING PRODUCTS 40

6.1	SHELLAC BASE PLATES	41
6.2	SCULPTURING WAX SPEZIAL	41
6.3	FLEXISTONE Standard	42
6.4	FLEXISTONE Plus	42
6.5	SILAPLAST Futur	43
6.6	SILAPLAST Futur cat f - lyquid	43
6.7	SILASOFT Normal	44
6.8	CAT P UNIVERSAL Futur - paste	44
6.9	BLUE ECO	45
6.10	BLUE ECO STONE	45
	MARKET COVERAGE	46

Our processes are carefully developed and strictly controlled and built on validated materials, to ensure consistent product quality and full traceability of our products as confirmed by compliance with Regulation (EU) 2017/745 on medical devices, an ISO 13485-certified quality management system, MDR 2017/745 certification, FDA registration and listing, Health Canada medical device licensing and others.

PoliDent

Creating smiles since 1958



www.polident.si



Artificial polymer teeth

- 1.1 REF - LINE
- 1.2 PRIMODENT
- 1.3 CROSS LINKED 2

REF-LINE

New era of aesthetic prosthetics by combining anatomical precision, advanced layering technology, and innovative composite acrylic material in one highly refined tooth line. Inspired by the natural beauty of teeth and developed for modern dental professionals, they deliver authentic esthetics, excellent color stability, high wear resistance, and reliable integration into efficient laboratory workflows. Ref-Line one-of-a-kind, versatile and premium in every detail.



- Multi-layered composite tooth line
- High-end aesthetics
- Natural color
- Natural look
- Precision in design
- Anatomical excellence
- Customization at its best
- Effortless integration
- Innovative material development
- Exceptional quality assurance

Dentures made with



Author: Arian Deutsch, CDT. Lab Deutsch Dental Arts in USA



Author: Christian Wibberley of CW Dentures In Oldham, England



Thank you for sharing your work with us.



REF-LINE Look and feel natural.

HIGH-END AESTHETICS, ANATOMICALLY SHAPED, MULTI-LAYERED COMPOSITE TOOTH-LINE

Developed, produced and controlled in Slovenia, EU / Designed by dental technician for dental technicians

NATURAL COLOUR AND SHAPE



Cervical wider shapes of tooth designs for covering metal structures in implants and partial prostheses.



Mesial and distal transparency, mamelons and cracks copy the natural structure of teeth, which remains preserved even after sanding.



- obscured fissural zones on the occlusal surface
- anatomically designed pronounced cusps assure the main taining of the natural tooth appearance and structure in individual matching with the antagonists



REF-LINE CONSISTS OF 33 SETS OF TEETH

- 16 sets of upper anterior teeth
- 8 sets of lower anterior teeth
- 9 sets of posterior teeth

AVAILABLE IN BL1, BL3 and 16 SHADES ACCORDING TO VITA SHADE GUIDE

BRAND NEW PRODUCTION TECHNOLOGY

- perfection of tooth design
- retention opening on the lower part of transcanine teeth provides for easier and faster work

REF-LINE MATERIAL

- improved abrasion resistance*
- improved hardness*

*Compared to conventional acrylic teeth Primodent and Cross Linked 2



All shapes in real size find in REF-LINE mould chart for pdf scan the code, or find it on our website <https://www.polident.si/en/downloads/catalogs/>

REF-LINE

Look and feel natural.

REF-LINE TEETH FOR AESTHETIC PROTHESES

Open a new era of dental perfection with Ref-Line artificial teeth – proof of the seamless combination of innovation and precision. Redefining excellence, these teeth are precisely designed by a dental technician for dental professionals worldwide.

Precision in design:

Every detail of Ref-Line teeth, from tooth shapes to surface texture, internal layering system, shading, mamelons, micro-cracks, and imperfections, has been accurately considered without compromise. The outcome is a tooth line that mirrors the incomparable beauty of natural teeth, combining organic forms with state-of-the-art digital production technologies, perfected processes, and in-house material development – all captured in a revolutionary product.

Anatomical excellence:

Featuring high anatomical shapes inspired directly by natural teeth, our physical and digital modeling, strikes the perfect harmony between natural aesthetics and production mold. Every detail has been enhanced to perfection.

Customization at its best:

Our precise layering and shading systems offer intense cervical and dentin colors with whitish translucent enamel. Diverse color effects are achieved by simply grinding the enamel layer. The high color intensity ensures a masking ability over metal substructure even in case of tooth reduction from palatal side. Darker canines and cervical areas, mamelons, mesial and distal transparency contribute to creating dentures that look remarkably authentic.

Effortless integration:

The bottom of each tooth is shaped to follow the gingival ridge contours, minimizing the need for extensive grinding during setup. A pre-existing cervical opening in posterior teeth simplifies grinding, leading to substantial time savings. This opening is designed to facilitate the modeling of implant-supported dentures and retention for thermo-injected non-PMMA denture base materials.

Innovative material development:

Our advanced composite acrylic material, outshines conventional acrylic. Composed of carefully selected polymers and matrix reinforced by inorganic micro-fillers, Ref-Line teeth boast improved resistance to mechanical wear, increased hardness, resistance to plaque adhesion, color stability, excellent polishing properties, and perfect adhesion to denture base materials.

Exceptional quality assurance:

With our continuous injection production technology, material density surpasses conventional techniques, ensuring no porosity, no shrinkage, and no excess material. This guarantees constant repeatability and dimensional stability a critical factor in digital denture design.

KEY ACHIEVEMENTS:

Natural look: Achieved through precise anatomical design and advanced layering.

High color stability: Our composite material ensures vibrant, stable colors.

No cracking: Silanized composite particles chemically bonded to acrylic matrix prevent cracking.

Choose Ref-Line teeth for a dental experience that perfectly blends innovation, aesthetics, and durability. Elevate your practice with the future of dental perfection.





PRIMODENT for beautiful smile



Proven all-round tooth line that combines natural aesthetics, functional reliability, and durable material performance. With excellent abrasion resistance, color stability, and heat resistance, it delivers consistent results for a wide range of prosthetic applications. Easy processing and dependable everyday use make Primodent a practical and high-value choice for dental professionals.

- High aesthetics three-layer acrylic teeth
- Excellent mechanical properties
- High abrasion resistance
- Color stable
- Heat stable
- Simple to use
- Available in 2 color shade guides

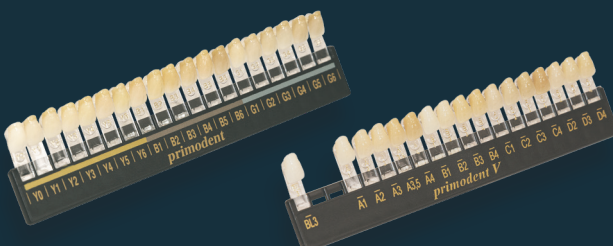


PRIMODENT CONSISTS OF 45 SETS OF TEETH

- 27 sets of upper anterior teeth (oval, square and triangular group)
- 10 sets of lower anterior teeth
- 8 sets of posterior teeth



AVAILABLE IN 19 PRIMODENT AND IN 17 PRIMODENT-V SHADES



All shapes in real size find in PRIMODENT mould chart for pdf scan the code, or find it on our website <https://www.polident.si/en/downloads/catalogs/>

CROSS LINKED 2 keep your smile



Combines proven material quality, outstanding natural aesthetics and dependable everyday performance in a standard but top-quality two-layer acrylic tooth line. It combines natural aesthetics, color and heat stability, and high resistance to abrasion for consistent, long-lasting results, delivering an excellent balance of quality and value.

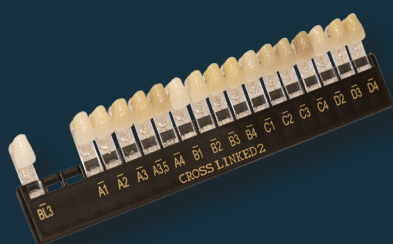
- Top quality two-layer acrylic teeth
- High abrasion resistance
- Color stable
- Heat stable
- Simple to use



CROSS LINKED 2 CONSISTS OF 31 SETS OF TEETH

- 18 sets of upper anterior teeth (oval, square and triangular group)
- 7 sets of lower anterior teeth
- 6 sets of posterior teeth

AVAILABLE IN 17 SHADES



All shapes in real size find in
CROSS LINKED 2 mould chart
 for pdf scan the code, or find it on our website
<https://www.polident.si/en/downloads/catalogs/>



PoliDent *Creating smiles since 1958*



www.polident.si

PoliDent

CAD/CAM discs & accessories

2.

- 2.1 PMMA CAD/CAM disc
 - monocolor
 - multilayer
- 2.2 Pink CAD/CAM disc
 - monocolor
 - multilayer
- 2.3 Casting CAD/CAM disc
- 2.4 Model CAD/CAM disc
- 2.5 X-ray CAD/CAM disc
- 2.6 Zir-Line discs
 - Zir-Line ML HS disc
 - Zir-Line ML disc
 - Zir-Line ML HYBRID disc
 - Zir-Line W disc
- 2.7 PoliCUTTER milling tools
 - for PMMA discs
 - for zirconia discs
 - for zirconia discs - diamond coated

PoliDent PMMA CAD/CAM disc

INTENDED USE

PMMA CAD/CAM DISC is suitable for:

- milling of long-term temporary crowns and bridges, and
- for milling and verifying the appliance on the plaster model/mouth before the final ZrO₂ milling process;
- milling the removable occlusal splint, and
- milling of individual denture teeth, full arch and tooth segments for denture manufacturing.
- Clear discs are also suitable for fabrication of molds in precision casting with metal or press ceramics (non-medical use).

	Specification	Typical average value	Method according to
Flexural strength	> 65 MPa // > 50 MPa	90 MPa // 120 MPa	EN ISO 20795-2 // EN ISO 10477
Flexural modulus	> 2000 MPa	2700 MPa	EN ISO 20795-2
Sorption	< 32 µg/mm ³	25 µg/mm ³	EN ISO 20795-2
Solubility	< 1,6 µg/mm ³	0,6 µg/mm ³	EN ISO 20795-2
Residual monomer	< 2,2 %	0,5 %	EN ISO 20795-1 / EN ISO 20795-2
Vickers hardness	> 24 HV	26 HV	/

• monocolour



COLOUR

BL1 - BL2 - BL3 - A1 - A2 - A3 - A3,5 - B1 - B2 - B3 - C2 - D2
 Enamel colors: E1 - E2
 CLEAR - BERRY - BLUE - GREEN - ORANGE

SHAPES

SHOULDER - diameter 98,5 mm
 ZZ - diameter 95 mm
 AG - diameter 100 mm

THICKNESS

12, 14, 15, 16, 18, 20, 25, 30, 35 mm

• multilayer

Multilayer variant of PoliDent PMMA CAD/CAM disc is composed by several layers of transient colors. The layering concept is optimized to match the natural color gradient of natural teeth. The final result is a highly aesthetic and economical restoration.



NATURAL TOOTH SHADE TRANSITIONS FOR AESTHETIC TEMPORARY CROWNS, BRIDGES, AND MILLED DENTURE TEETH.

The advantage of ML disc is:

- the unnoticeable transition from the dark neck colour to the bright enamel colour.
- This is performed with our five layers coloring technique.
- Natural looking aesthetic is achieved.
- More natural looking translucency compared to other dental materials.
- Good bonding to denture bases and other PMMA materials.

COLOUR

BL2 - BL3 - A1 - A2 - A3 - A3,5 - A4 - B1 - B2 - B3 - B4
 C1 - C2 - C3 - C4 - D2 - D3 - D4

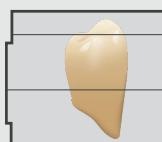
SHAPES

SHOULDER - diameter 98,5 mm
 ZZ - diameter 95 mm
 AG - diameter 100 mm

THICKNESS

15, 16, 18, 20 mm

LAYERING



1 light layer	} 8,5 mm
2-4 three transition layers	
5 dark layer	6,5 mm (disc 15 mm)
	7,5 mm (disc 16 mm)
	9,5 mm (disc 18 mm)
	11,5 mm (disc 20 mm)

*Registered in the USA with the intended purpose:

- for milling of long-term temporary crowns and bridges, and for milling and verifying the appliance on the plaster model/mouth before the final ZrO₂ milling process, and
- for milling of individual denture teeth, full arch and tooth segments to manufacture denture.

*Licensed by Health Canada with the intended purpose:

- for milling of short-term temporary crowns and bridges, and for milling and verifying the appliance on the plaster model/mouth before the final ZrO₂ milling process.

PoliDent PINK CAD/CAM disc

INTENDED USE

PINK CAD/CAM DISC is suitable for:

-milling full and partial dentures and temporary immediate load implant supported dentures

	Specification	Typical average value	Method according to
Flexural strength	> 65 MPa	90 MPa	EN ISO 20795-1
Flexural modulus	> 2000 MPa	2700 MPa	EN ISO 20795-1
Sorption	< 32 µg/mm ³	25 µg/mm ³	EN ISO 20795-1
Solubility	< 1,6 µg/mm ³	0,6 µg/mm ³	EN ISO 20795-1
Residual monomer	< 2,2 %	0,5 %	EN ISO 20795-1

• monocolor

COLOUR

pink, pink veined

SHAPES

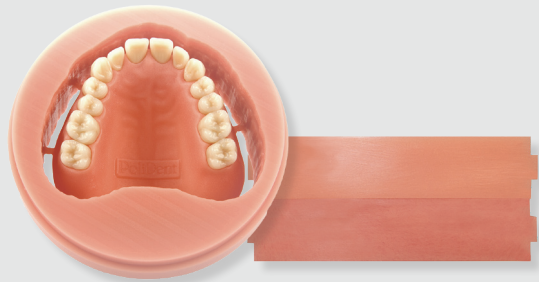
SHOULDER - diameter 98,5 mm

ZZ - diameter 95 mm

AG - diameter 100 mm

THICKNESS

20, 25, 27, 30, 35, 40 mm



• multilayer

COLOUR / THICKNESS

G71 20 mm

ML pink 25, 30 mm

G74 20, 25, 30 mm

SHAPES

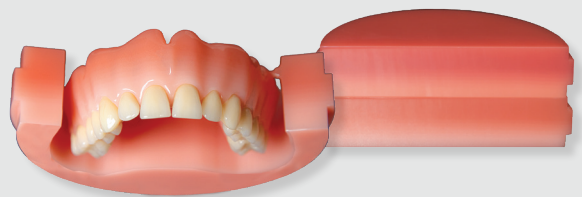
SHOULDER - diameter 98,5 mm

ZZ - diameter 95 mm

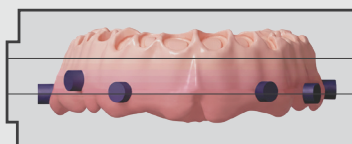
AG - diameter 100 mm

PERFECT SOLUTION FOR MILLED DENTURES WITH MORE NATURAL APPEARANCE.

PoliDent multilayer PINK CAD/CAM DISC features multiple pigmented layers with smooth colour transitions, designed to reproduce the natural gingival colour gradient. It enables natural-looking denture bases while offering an efficient, economical and highly aesthetic solution for digital prosthetics.

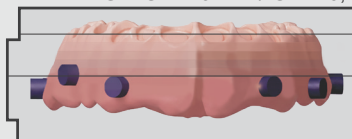


LAYERING ML PINK 25, 30 mm



1 light layer
2-6 five transition layers } 18,5 mm
7 dark layer 6,5 mm (disc 25 mm) / 11,5 mm (disc 30 mm)

LAYERING G71 20 mm / G74 20, 25, 30 mm



1 light layer
2-6 five transition layers } 11,5 mm
7 dark layer 8,5 mm (disc 20 mm) / 13,5 mm (disc 25 mm) / 18,5 mm (disc 30 mm)

PoliDent

CASTING CAD/CAM disc**INTENDED USE**

CASTING CAD/CAM DISC is used for:

- milling frameworks for casting,
- milling of crowns, bridges and castable layers for press ceramic
- verifying frameworks on plaster model before final ZrO₂ milling (especially recommended for larger ZrO₂ frameworks)

**SPECIFICATIONS**

- 100% organic material that burns-out without any residual ash

COLOUR

clear

SHAPES

SHOULDER – diameter 98,5 mm

ZZ – diameter 95 mm

AG – diameter 100 mm

THICKNESS

12, 15, 18, 20, 25, 30 mm

PoliDent

MODEL CAD/CAM disc**INTENDED USE**

MODEL CAD/CAM DISC is used for:

Milling of stumps/ dies, working models and antagonists

Digital models are CAD designed from 3D data acquired with a wide range of digital impression-taking solutions.

**SPECIFICATIONS**

- a special, highly-compressed material with exceptional abrasion resistance
- It doesn't absorb liquids so it is recommended for ceramic layering
- excellent milling ability
- available in two densities

COLOUR

brown, beige

SHAPES

SHOULDER – diameter 98,5 mm

ZZ – diameter 95 mm

AG – diameter 100 mm

THICKNESS

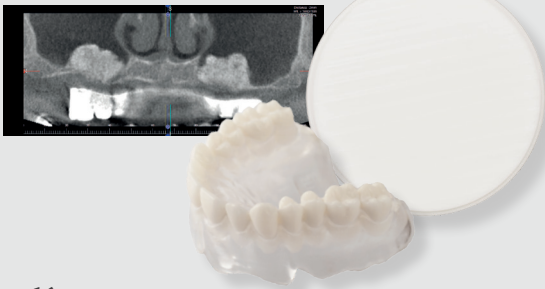
25 mm

PoliDent

X-RAY CAD/CAM disc**INTENDED USE**

X-RAY CAD/CAM DISC is X-ray visible disc used for:

- for milling diagnostic stents for implant planning
- Allows visibility of teeth setup in the X-ray CAT scan for implant planning and determination.

**SPECIFICATIONS**

- contains X-ray visible powder
- homogeneous mix ensures best visibility
- prevents light scattering

SHAPES

SHOULDER – diameter 98,5 mm

ZZ – diameter 95 mm

AG – diameter 100 mm

THICKNESS

12, 14, 15, 16, 18, 20, 25 mm

ZIR-LINE ML HS disc

ZIR-Line ML HS disc is suitable for aesthetic restorations every span. The material offers the perfect compromise between aesthetics and strength. The integrated color gradient enables the efficient production of restorations with natural appearance.

INTENDED USE

ZIR-LINE ML HS disc is used for:

Veneers, Inlays, Onlays, anatomically reduced crown, Fully anatomical (monolithic) crown front tooth, Fully anatomical (monolithic) crown posterior tooth, Primary telescope, Anatomically reduced bridge (up to 3 units), Anatomically reduced bridge (up to 14 units), Fully anatomical (monolithic) bridge (up to 3 units), Fully anatomical (monolithic) bridge (up to 14 units), and Hybrid abutment crown.



SPECIFICATIONS

Type: Multilayer

Material: 4Y-TZP

Strength: 1200 (±150) MPa

Very high fracture toughness

Incisal and dentin layer + 2 transition layers = natural color gradient

Perfectly suited for fully anatomical (monolithic) crowns and bridges and cut back (one layer)

COLOUR

BL

A1 – A2 – A3 – A3,5 – A4

B1 – B2 – B3 – B4

C1 – C2 – C3 – C4

D2 – D3 – D4

SHAPES

SHOULDER – diameter 98,5 mm

THICKNESS

14, 18, 22 mm

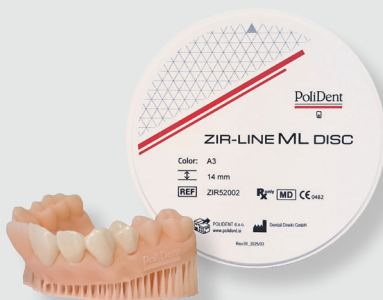
ZIR-LINE ML disc

ZIR-LINE MULTILAYER DISC is suitable for highly aesthetic restorations up to three sections. The high light transmission through the increased Proportion of the cubic phase in the cubic-tetragonal mixed structure and the stable mechanical properties are perfectly balanced. The integrated color gradient enables the efficient production of Restorations with a natural appearance.

INTENDED USE

ZIR-LINE ML disc is used for:

Veneers, Inlays, Onlays, Anatomically reduced crown, Fully anatomical (monolithic) crown front tooth, Fully anatomical (monolithic) crown posterior tooth, Anatomically reduced bridge (up to 3 units), Fully anatomical (monolithic) bridge (up to 3 units), and Hybrid abutment crown.



SPECIFICATIONS

Type: Multilayer

Material: 5Y-TZP

Strength: 700 (±100) MPa

More stable than lithium disilicate with comparable aesthetics

Our favorite for the front teeth area

Incisal and dentin layer + 2 transition layers = natural color gradient

Aesthetic finish with minimal effort

COLOUR

BL

A1 – A2 – A3 – A3,5 – A4

B1 – B2 – B3 – B4

C1 – C2 – C3 – C4

D2 – D3 – D4

SHAPES

SHOULDER – diameter 98,5 mm

THICKNESS

14, 18, 22 mm

ZIR-LINE ML Hybrid disc

ZIR-LINE ML HYBRID DISC is suitable for the production of highly aesthetic restorations with large spans. The different translucencies and flexural strengths from cervical to incisal ensure stability and aesthetics.

The hybrid layer from the “yellow -warm” aesthetic line has precise layering and fits seamlessly into the row of teeth. 16 colors and three bleach colors according to the Vita shade guide, are covering all common tooth colors and meeting the highest aesthetic demands.

INTENDED USE

ZIR-LINE ML HYBRID DISC is perfect for:

All indications: from monolithic single crowns to complex superstructures for the anterior and posterior teeth.



SPECIFICATIONS

Type: hybrid layer

Material: 5Y-TZP + 3Y-TZP

Strength: > 800 MPa incisal area, 1050 (±150) MPa body area / High process reliability

Highest Precision through distortion-free material

Fast and economical for natural - looking fully anatomical (monolithic) restorations

COLOUR

BL1 – BL2 – BL3

A1 – A2 – A3 – A3,5 – A4

B1 – B2 – B3 – B4

C1 – C2 – C3 – C4

D2 – D3 – D4

SHAPES

SHOULDER – diameter 98,5 mm

THICKNESS

16, 20, 25 mm

ZIR-LINE W disc

ZIR-LINE W DISC is suitable for aesthetic restorations of any span. The “classic” 2nd generation material offers positive mechanical properties and high light transmission.

INTENDED USE

ZIR-LINE W DISC is perfect for:

all dental constructions, bridges with max. 2 connected pontics



SPECIFICATIONS

Type: II

Material: 3Y-TZP-LA

Strength: 1150 (±150) MPa

High strength

High fracture toughness

Perfectly suitable for high aesthetic veneering and cut back (one layer) Physical Properties

COLOUR

WHITE

SHAPES

SHOULDER – diameter 98,5 mm

THICKNESS

10, 12, 14, 16, 18, 20, 25 mm

PoliDent

POLICUTTER MILLING TOOLS

PMMA DISCS

	art.nr.	head dia. mm	shank dia. mm	overall length mm	use for
AMANN GIRRBACH	15724	1.0	3.0	47	PMMA
	15725	2.5	3.0	47	PMMA
	15726	0.6	3.0	47	PMMA
IMES ICORE	15727	1.0	3.0	48	PMMA
	15728	2.5	3.0	48	PMMA
	15729	0.6	3.0	48	PMMA
VHF	15730	1.0	3.0	35	PMMA
	15731	2.0	3.0	35	PMMA
	15732	0.6	3.0	35	PMMA
ZIRKONZAHN	15733	1.0	3.0	50	PMMA
	15734	2.0	3.0	50	PMMA
	15735	0.5	3.0	50	PMMA
ROLAND	15744	2.0	4.0	50	PMMA
	15745	1.0	4.0	50	PMMA
	15746	0.6	4.0	50	PMMA



ZIRCONIA DISCS

	art.nr.	head dia. mm	shank dia. mm	overall length mm	use for
AMANN GIRRBACH	15700	1.0	3.0	48	Zr
	15701	2.5	3.0	48	Zr
	15702	0.6	3.0	48	Zr
IMES ICORE	15703	1.0	3.0	48	Zr
	15704	2.5	3.0	48	Zr
	15705	0.6	3.0	48	Zr
VHF	15706	1.0	3.0	35	Zr
	15707	2.0	3.0	35	Zr
	15708	0.6	3.0	35	Zr
ZIRKONZAHN	15709	1.0	3.0	57	Zr
	15710	2.0	3.0	57	Zr
	15711	0.5	3.0	57	Zr
ROLAND	15736	2.0	4.0	50	Zr
	15737	1.0	4.0	50	Zr
	15738	0.6	4.0	50	Zr
	15739	0.3	4.0	50	Zr



ZIRCONIA DISCS diamond coated

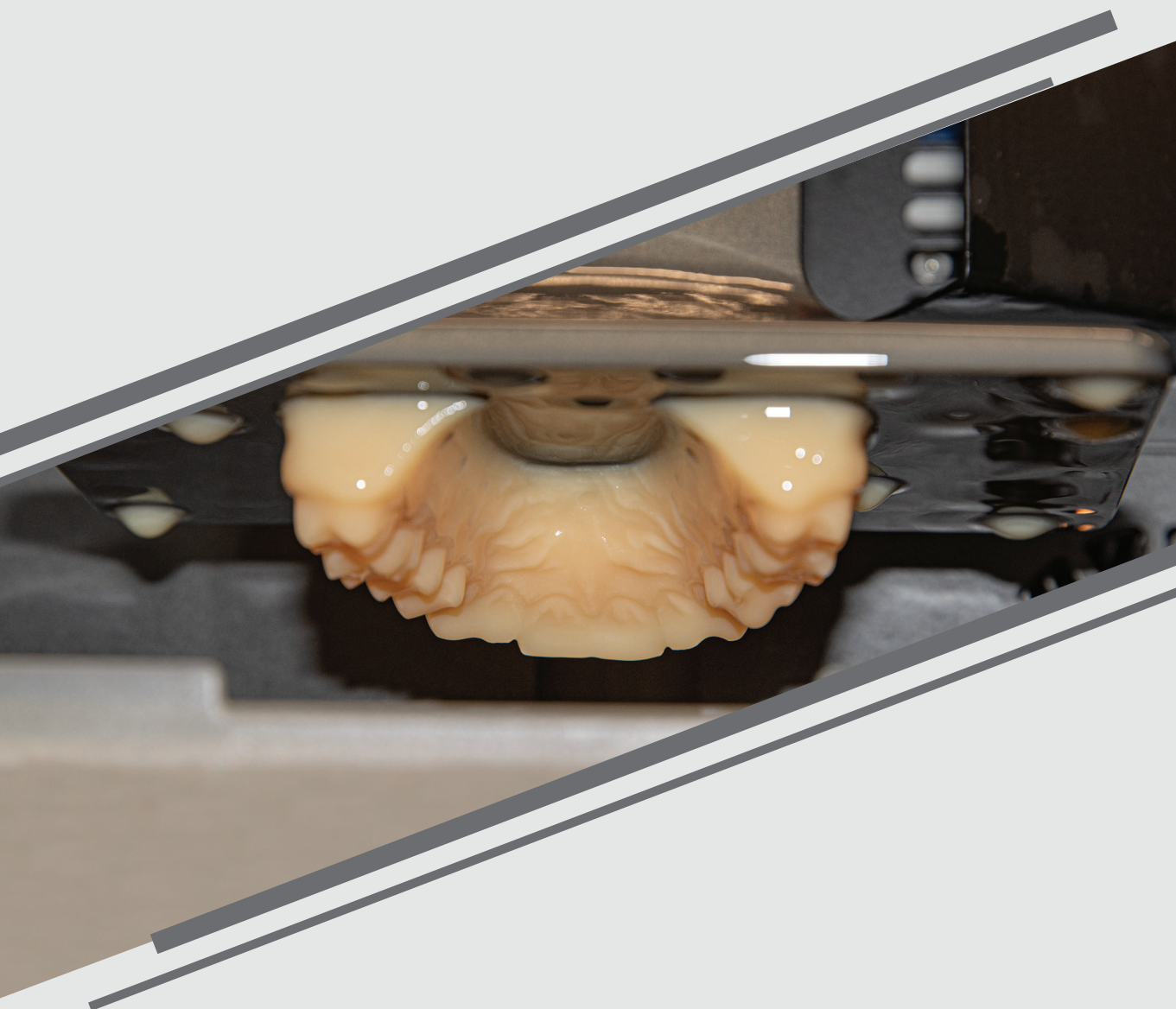
	art.nr.	head dia. mm	shank dia. mm	overall length mm	use for
AMANN GIRRBACH	15712	1.0	3.0	48	Zr - with diamond
	15713	2.5	3.0	48	Zr - with diamond
	15714	0.6	3.0	48	Zr - with diamond
IMES ICORE	15715	1.0	3.0	48	Zr - with diamond
	15716	2.5	3.0	48	Zr - with diamond
	15717	0.6	3.0	48	Zr - with diamond
VHF	15718	1.0	3.0	40	Zr - with diamond
	15719	2.0	3.0	40	Zr - with diamond
	15720	0.6	3.0	40	Zr - with diamond
ZIRKONZAHN	15721	1.0	3.0	57	Zr - with diamond
	15722	2.0	3.0	57	Zr - with diamond
	15723	0.5	3.0	57	Zr - with diamond
ROLAND	15740	2.0	4.0	50	Zr - with diamond
	15741	1.0	4.0	50	Zr - with diamond
	15742	0,6	4.0	50	Zr - with diamond
	15743	0,3	4.0	50	Zr - with diamond



PoliDent



Creating smiles since 1958



www.polident.si

3.

3D printing

- 3.1 poli3Dent MODEL pro
- 3.2 poli3Dent CAST
- 3.3 poli3Dent CLEANER

poli3Dent MODEL pro

Poli3Dent MODEL pro provides the perfect balance between precision and simplicity. Low-viscosity resin enables superb details, quick treatment and bland odour – for consistent results and professional quality at each printing.

INTENDED USE

Poli3Dent MODEL pro is light-curing technical resin based on (meth)acrylate for additive manufacturing of all kinds of dental models - working, study and presentation dental models, including models for thermoforming appliances. For professional use. Most suitable for DLP 3D printers.



ADVANTAGES

- low odour
- relatively low viscosity of the liquid
- high dimensional precision of 3D printed parts
- good price-performance ratio

COLOUR

peach

PACKAGING

08201 liquid 1 kg

Poli3Dent CAST

3D printing material Poli3Dent CAST is a high precision resin for production of burnout objects. Experience the benefits of a quick ash-free burnout, low viscosity and exceptional stability of the material. Dark blue colour enables you to recognize the finest details of your printed objects. Poli3Dent CAST is validated with UniveCAST investment material which ensures reliability and repeatability of the casting process.

INTENDED USE

Light-curing resin based on (meth)acrylate for additive manufacturing (3D printing) of residue-free burnout objects for casting process. Compatible with the Asiga MAX UV 385.

When printed parts are invested using UniveCAST investment material, the process delivers exceptional accuracy, stability and repeatability. This validated material system reduces the risk of errors and ensures reliable results.



ADVANTAGES

- Fast burnout
 - High dimensional accuracy
 - Complete burnout (no ash residue)
 - Low viscosity - efficient cleaning of printed objects
 - Precise reproduction of fine details
 - High material stability - no risk of sedimentation
 - Validated compatibility with univeCAST investment material
 - Modernized workflow – no more manual wax modeling
- The material ensures clean burn-out and high dimensional accuracy.

SPECIFICATIONS

Shore D hardness: > 85

COLOUR

blue

PACKAGING

P3DC-PB1 liquid 1 kg

poli3Dent CLEANER

The cleaning agent is virtually odourless. Save transport and storage costs by using a concentrated cleaning agent. No special storage conditions are required as its composition is not alcohol-based. Non-flammable and not irritating to the skin.

INTENDED USE

Poli3Dent CLEANER is concentrate for preparation of water-based cleaning solution intended for washing resin prints in an ultrasonic bath.



ADVANTAGES

- oily liquid with very low volatility and odour
- great affinity for (meth)acrylate based resins
- . concentrate
- (ratio: 1 part Poli3Dent CLEANER on 4 parts of water)

COLOUR

transparent

PACKAGING

08202 liquid 1 kg



PoliDent *Creating smiles since 1958*



www.polident.si

4.

Laboratory material

- 4.1 ACRYLICS
 - poliHOT
 - poliCOLD
 - K-30 S
 - poliREPAR S
 - ORTOpoli
 - poliTEMP
 - poliTRAY
 - uniTRAY LC
- 4.2 PUMICE
- 4.3 BRUSHES
- 4.4 INVESTMENT MATERIAL
 - poliVEST
 - poliTERM SPEED
 - poliPRESS
 - univeCAST
- 4.5 CORUNDUM
- 4.6 DENTAL PLASTERS
 - ALABASTER
 - poliDUR
 - poliSTONE
 - primaART
 - primaROCK
- 4.7 SILICONES

poliHOT

INTENDED USE

POLIHOT is an acrylate for the fabrication of full and partial dentures by using the heat curing and is color matching with the acrylate for the fabrication of repairs POLICOLD.



SPECIFICATIONS

- color matching with the acrylate for the fabrication of repairs POLICOLD
- heat curing

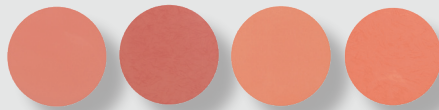
COLOUR

Pink, pink veined, M26, M26 V

PACKAGING

- 02866 Polihot powder pink – 700 g
- 02876 Polihot powder pink veined – 700 g
- 03064 Polihot powder M26 – 700 g
- 03065 Polihot powder M26V – 700 g
- 02867 Polihot liquid – 500 ml

* for larger orders we can arrange other quantities of packaging.



poliCOLD

INTENDED USE

POLICOLD is an acrylate for the the fabrication of partial dentures, repairs and rebasings by using the cast technique and the cold curing



SPECIFICATIONS

- color matching with acrylate for the fabrication of dentures using the heat curing POLIHOT
- cold curing

COLOUR

Pink, pink veined

PACKAGING

- 02868 Policold powder pink – 700 g
- 02879 Policold powder pink veined – 700 g
- 02869 Policold liquid – 500 ml
- 02875 Complete: Policold powder pink – 200 g,
Policold liquid – 150 ml
- 02885 Complete: Policold powder pink veined – 200 g,
Policold liquid – 150 ml

* for larger orders we can arrange other quantities of packaging.

K-30 S

INTENDED USE

K-30 S is an acrylate for the fabrication of full and partial dentures by using the packing / pressing technique and the classical heat curing and is color matching with the acrylate for the fabrication of repairs POLIREPAR S.

SPECIFICATIONS

- color matching with the acrylate for the fabrication of repairs POLIREPAR S
- packing / pressing technique and the classical heat curing

COLOUR

Pink, pink veined, PN, PN veined, M26, M26V

PACKAGING

- 02706 K-30 S powder pink - 700 g
- 02719 K-30 S powder pink veind -700g
- 02721 K-30 S powder PN - 700 g
- 02722 K-30 S powder PN veined - 700 g
- 02734 K-30 S powder M26V - 700g
- 02736 K-30 S powder M26 - 700g
- 02707 K-30 S liquid - 500 ml

* for larger orders we can arrange other quantities of packaging.



poliREPAR S

INTENDED USE

POLIREPAR S is an acrylate for the fabrication of repairs by using the cold curing and is color matching with acrylate for the fabrication of dentures using the heat curing K-30S.

SPECIFICATIONS

- color matching with the acrylate for the fabrication of repairs K-30S
- cold curing

COLOUR

Pink, PN, PNV

PACKAGING

- 02948 Polirepar S powder - 200 g
- 03094 Polirepar S powder PN - 200 g
- 03095 Polirepar S powder PNV - 200 g
- 02716 Polirepar S liquid - 150 ml

* for larger orders we can arrange other quantities of packaging.



ORTOPoli

INTENDED USE

ORTOPOLI is an acrylate for the fabrication of orthodontic appliances by using the spray-on technique and the cold curing.



SPECIFICATIONS

- large choice of basic colors
- the colouring agents are cadmium free, therefore it isn't toxic
- spray-on technique and the cold curing
- fast mixing of the powder with the liquid, the material therefore doesn't spread all over the model

COLOUR

Red, yellow, blue, colourless, fl. yellow, orange, indigo blue, green, pink

PACKAGING

- 02872 powder, colourless - 700 g, shaker
- 02873 liquid, red - 500 ml
- 02882 liquid, yellow - 500 ml
- 02883 liquid, blue - 500 ml
- 02884 liquid, colourless - 500 ml
- 02979 liquid, fl. yellow - 150 ml
- 02980 liquid, orange - 150 ml
- 02981 liquid, indigo blue - 150 ml
- 02982 liquid, green - 150 ml
- 02983 liquid, pink - 150 ml

* for larger orders we can arrange other quantities of packaging.

poliTEMP

INTENDED USE

POLITEMP is cold curing acrylic resin for temporary crowns and bridges.



SPECIFICATIONS

- high precision and thus a better contact of the crown with the gingival area of the core
- glossy surface and minor accumulation of plaque because of the non porosity of the final product
- highly abrasion resistant
- simple correction
- not toxic
- cold curing

COLOUR A1-A2-A3-A3,5-B3-C2-D3-Incisal

PACKAGING

- 02904 powder A1 - 80 g
- 02949 powder A2 - 80 g
- 02888 powder A3 - 80 g
- 02889 powder A 3,5 - 80 g
- 02890 powder B3 - 80 g
- 02891 powder C2 - 80 g
- 02892 powder D3 - 80 g
- 02893 powder incisal - 80 g
- 02894 liquid - 150 ml

poliTRAY

INTENDED USE

POLITRAY is an acrylate for the fabrication of individual impression trays by using cold curing.



SPECIFICATIONS

- short polymerisation
- microporous surface enables a good hold to the impression material
- cold curing

COLOUR Blue

PACKAGING

- 02870 Politray powder – 700 g
- 02871 Politray liquid – 500 ml

* for larger orders we can arrange other quantities of packaging.

uniTRAY LC

INTENDED USE

Light-curing material in form of prefabricated upper baseplates for the fabrication of custom impression trays and bite-blocks. This material can be cured in all ultraviolet and Halogen light curing units.



SPECIFICATIONS

- light-curing material
- rigid after polymerisation
- can be cured in all ultraviolet and Halogen light curing units
- place the tray with the model in a light curing unit for 6-10 min

COLOUR

Pink

PACKAGING

15000 Unitray LC - box with 50 upper baseplates

Laboratory material - PUMICE 4.2

PLOVEC - pumice

INTENDED USE

PUMICE is refined from volcanic rock and is used as a cleaning and polishing agent for acrylics in dental prosthetics.



SPECIFICATIONS

- volcanic rock
- light and fine porous abrasive
- neatly cleaned

COLOUR

White

PACKAGING

05725 Plovec 25 kg bag

05724 Plovec 5 kg container

Laboratory material - BRUSHES 4.3

BRUSHES

INTENDED USE

Hard brushes, soft brushes, leather and cotton wheels for polishing alloys, porcelain and acrylic surfaces.



SPECIFICATIONS

- hard brushes
- soft brushes
- leather wheels
- cotton wheels

PACKAGING

07888 hard brush with shank

07882 FI 21 hard brush with shank

07880 FI 48 hard brush without shank

07887 soft brush with shank

07885 FI 21 soft brush with shank

07881 FI 85 leather wheel without shank

07900 FI 100 40 cotton wheel without shank

07901 FI 100 24 cotton wheel without shank

poliVEST

INTENDED USE

POLIVEST is carbon-free phosphate bonded precision casting investment for crown and bridgework of all dental alloys by quick or progressive heating procedures.



SPECIFICATIONS

- long processing time (19 – 24°C) 4 - 7 min
- optimal flow characteristics make investing easier and help to prevent unwanted air bubbles
- expansion is precisely regulated by varying the concentration of the expansion liquid with water
- fast heating up out reduces the processing time and increases productivity
- easy separation from the casting object after cooling

PACKAGING

- 05844 Polivest powder - 6 kg (40 x 150 g)
- 05825 Polisol universal liquid - 1l bottle

poliTERM SPEED

INTENDED USE

POLITERM SPEED is a fine grained model casting investment material for fast burn out as well as for traditional slow heating processes. It is suitable for partial dentures and high-quality combination works.



SPECIFICATIONS

- equally suitable for gel and silicone duplication
- conventional or rapid heating up with ideal expansion values
- Rapid preheating: the insertion temperature is 600°C, this results in time savings compared to investment materials that have to be heated conventionally

PACKAGING

- 05887 Politerm speed powder - 8 kg (20 x 400 g)
- 05825 Polisol liquid - 1l bottle

poliPRESS

INTENDED USE

POLIPRESS is a phosphate bonded casting investment material for pressable ceramics. (full ceramics, press-over-zircon ceramics, press-over-metal ceramics)



SPECIFICATIONS

- perfect fit
- high degree of precision
- quick heating
- high compression strength

PACKAGING

- 05934 Poli Press powder - 6 kg (60 x 100 g)
- 05832 Poli Press liquid - 1l bottle

univeCAST

WE DEVELOPED RESIN FOR 3D PRINTING OF BURN-OUT OBJECTS FOR THE METAL CASTING PROCESS - **poli3Dent CAST**. WHEN PRINTED PARTS ARE INVESTED USING UNIVECAST INVESTMENT MATERIAL, THE PROCESS DELIVERS EXCEPTIONAL ACCURACY, STABILITY AND REPEATABILITY. THIS VALIDATED MATERIAL SYSTEM REDUCES THE RISK OF ERRORS AND ENSURES RELIABLE RESULTS.

INTENDED USE

Universal phosphate-bonded investment material intended for investing wax or 3D-printed crowns, bridges, and frameworks for dentures, as well as for casting dental alloys or pressing dental ceramics.



SPECIFICATIONS

- universal application, one investment for model castings, combination works, as well as crowns and bridges
- specially developed for casting non-precious dental alloys
- casting is simple even with ringless technique
- for quick heating, place the cylinder into the furnace at the final burnout temperature and casting can commence within an hour; this allows considerable time savings

PACKAGING

- 05904 Univecast powder - 6 kg (40 x 150 g)
- 05825 Polisol liquid - 1l bottle

poliKORUND

INTENDED USE

POLIKORUND is 99,8% Aluminium Oxyde (Al_2O_3) for blasting of all alloys and ceramics.



SPECIFICATIONS

- sharp grain form and extreme hardness ensure highest blasting efficiency.- light and fine porous abrasive

COLOUR

White

PACKAGING

- 05721 Poli korund 250 mic - 25 kg bag
- 05722 Poli korund 110 mic - 25 kg bag
- 05723 Poli korund 50 mic - 25 kg bag
- 05755 Poli korund 250 mic - 5 kg container
- 05756 Poli korund 110 mic - 5 kg container
- 05757 Poli korund 50 mic - 5 kg container

ALABASTER

INTENDED USE

ALABASTER is particularly multiple-purpose dental plaster – **Type 2**, used for models for impression trays for partial and total dentures, models for supporting and reparation of dentures and for study models.



SPECIFICATIONS

- white colour and odourless
- mixtures of calcium sulphate with other additives
- mix ratio: water (ml) / plaster (g) - 60 / 100
- expansion: 0,16 %
- setting time: 10 - 14 min
- working time: 5 - 6 min

COLOUR

White

PACKAGING

- 05801 Alabaster 5 kg plastic container
- 05720 Alabaster 20 kg plastic container
- 05802 Alabaster 25 kg bag

poliDUR

INTENDED USE

POLIDUR is hard dental plaster – **Type 3** used for models for partial and total dentures, models for orthodontic appliances, models for supporting and reparation of dentures and study models.



SPECIFICATIONS

- blue colour and odourless
- mixtures of calcium sulphate with other additives
- mix ratio: water (ml) / plaster (g) - 30 / 100
- expansion: 0,18 %
- setting time: 7 - 12 min

COLOUR

blue

PACKAGING

- 05754 Polidur 5 kg plastic container
- 05744 Polidur 20 kg plastic container
- 05864 Polidur 25 kg bag

poliSTONE

INTENDED USE

POLISTONE is very hard dental plaster – **Type 4** used for working models, antagonistic models, models for partial and total dentures, for use in implantology, models for orthodontic appliances, models for supporting and reparation of dentures and for study models.



SPECIFICATIONS

- beige colour and odourless
- mixture of calcium sulphate and additives
- mix ratio: water (ml) / plaster (g) - 22 / 100
- expansion: 0,09 %
- setting time: 12-14 min

COLOUR

beige

PACKAGING

- 05970 Polistone 5 kg bag
- 06968 Polistone 20 kg box / 4 x 5 kg bag
- 05830 Polistone 25 kg bag

primaART

INTENDED USE

PRIMA ART is hard dental plaster – **Type 1** the special plaster Prima art is used to fix models on the articulator and applications with short setting time.



SPECIFICATIONS

- white colour and odourless
- mix ratio: water (ml) / plaster (g) - 63 / 100
- low setting expansion: 0,09 %
- fast setting time: 3 min
- fast working time: 60 - 90 sec

COLOUR

White

PACKAGING

- 05907 Prima art 5 kg plastic container
- 05908 Prima art 20 kg plastic container

primaROCK

INTENDED USE

PRIMA ROCK is high strength die stone - **Type 4** used for working models, antagonistic models, models for partial and total dentures, models for orthodontic appliances, models for supporting and reparation of dentures, study models and for use in implantology.



SPECIFICATIONS

- yellow colour and odourless
- mix ratio: water (ml) / plaster (g) - 20 / 100
- low setting expansion: 0,13 %
- fast setting time: 12 min
- short working time: 6 - 8 min

COLOUR

yellow

PACKAGING

- 05911 Prima rock 2 kg plastic container
- 05925 Prima rock 5 kg plastic container
- 05913 Prima rock 20 kg plastic container

poliSILICONE

INTENDED USE

POLISILICONE is addition-curing two-component duplicating silicone for duplicating models in dental laboratories.



SPECIFICATIONS

- compatible with stone and phosphate materials
- models are easily removed
- extremely precise and dimension stable
- high elasticity
- hardness Shore A: 24-26

COLOUR

Catalyst - white, base material - pink

PACKAGING

- 06957 Poli silicone (24 shore) A+B



5.

Dental practice material

5.1 DISPOSABLE PRODUCTS

protective medical gloves

protective medical apron

PROTECTIVE MEDICAL GLOVES

INTENDED USE

Disposable protective gloves for safety and hygiene in everyday work in the dental office.



SPECIFICATIONS

Latex

- non-sterile premium latex examination gloves
- natural colored gloves - chlorinated-micro-textured
- green gloves - peppermint flavored

Nitrile

- non-sterile nitrile examination gloves

COLOUR

natur, peppermint, blue

PACKAGING

Latex

Gloves King chlorinated-micro-textured, natur 100 pcs

1. powder-free: 16525 XS, 16526 S, 16527 M, 16528 L
2. with powder: 16535 XS, 16536 S, 16537 M, 16538 L

Gloves King peppermint flavoured, green 100

1. powder-free: 16560 XS, 16561 S, 16562 M, 16563 L
2. with powder: 16520 XS, 16521 S, 16522 M, 16523 L

Nitril

Gloves King nitril, blue, 100 pcs

1. powder-free: 16529 S, 16517 M, 16519 L

PROTECTIVE MEDICAL APRON

INTENDED USE

Protective covers for patient protection. Disposable, in various colors. Made of cellulose. Impermeable, hygienic material. For reliable protection.



SPECIFICATIONS

- multi-layer super absorbent 100% pure cellulose
- single-layer polyethylene
- waterproof

COLOUR

Green, blue, white, orange, pink

PACKAGING

- 07864 patient apron 53 x 80, green, roll, 60 pcs
- 07865 patient apron 53 x 80, blue, roll, 60 pcs
- 07866 patient apron 53 x 80, white, roll, 60 pcs
- 07912 patient apron 53 x 80, orange, roll, 60 pcs
- 07914 patient apron 53 x 80, pink, roll, 60 pcs
- 07917 patient apron 33 x 45, green, 500 pcs
- 07921 patient apron 33 x 45, blue, 500 pcs



6.

Other selling products

- 6.1 SHELLAC BASE PLATES
- 6.2 SCULPTURING WAX SPEZIAL
- 6.3 FLEXISTONE Standard
- 6.4 FLEXISTONE Plus
- 6.5 SILAPLAST Futur
- 6.6 SILAPLAST Futur cat f - lyquid
- 6.7 SILASOFT Normal
- 6.8 CAT P UNIVERSAL Futur - paste
- 6.9 BLUE ECO
- 6.10 BLUE ECO STONE

SHELLAC BASE PLATES

INTENDED USE

SHELLAC BASE PLATES - allergy-free and sustainable work in a dental laboratory with natural shellac base plates for individual impression trays and making dentures - base material for bite impressions and tooth lineups.



SPECIFICATIONS

- easily and uniformly processed with heat
- dimensionally stable (retains shape during try-in in patient mouth)
- available in two versions for maxilla and mandible
- material thickness approx. 1.3 mm

COLOUR

Pink

PACKAGING

15114 maksila 100 plates

SCULPTURING WAX SPEZIAL

INTENDED USE

SCULPTURING WAX SPEZIAL - base plate wax in summer quality (mediumhard) and winter quality (soft) for total and partial dentures, bite rims & registration and for modelling wax plates.



SPECIFICATIONS

- allrounder among the base plate waxes
- summer quality with a solidification point of 56°C and winter quality with a solidification point of 54 °C
- size of the single plate: 175 x 80 mm
- sheet thickness: 1,5 mm

COLOUR

Pink

PACKAGING

12166 winter 500 g
12040 summer 500 g

FLEXISTONE Standard

INTENDED USE

FLEKSISTONE Standard is insulating and modelling material which can be easily applied in one single procedure onto acrylic teeth and wax, forming a thin, very hard insulating layer for fixing of teeth during pressing. No retention crystals are required.



SPECIFICATIONS

- C-silicone based
- light bodied
- excellent stability
- very high final hardness (75 Shore A)
- for insulating acrylic or porcelain teeth during - investing

COLOUR

green

PACKAGING

06966 bottle with stand of (350 g)
190 ml / catalyst, bottle of 30 ml
mixing bowl 1 pc

FLEXISTONE Plus

INTENDED USE

FLEKSISTONE Plus is insulating and modelling material for insulating dentures during investing.



SPECIFICATIONS

- A-silicone based
- light bodied
- excellent stability
- very high final hardness (85 Shore A)
- optimum flow properties during spatulation
- protection of acrylics and acrylic teeth against plaster
- easy application - 1:1 mixing system
- especially indicated for use with injection moulding techniques

COLOUR

Base blue, Catalyst white 1:1

PACKAGING

06863 base bottle 160 ml with stand
catalyst bottle 160 ml with stand
mixing bowl 1 pc

SILAPLAST Futur

Precision impression silicone for dental prosthetics, tray material for correction impressions (two-step), double-mix technique (single-step) and anatomic impressions

SILAPLAST Futur - putty

INTENDED USE

SILAPLAST Futur – putty is base mase for precision impression silicone for dental prosthetics.



SPECIFICATIONS

- very high consistency, smooth initial consistency – ideal final hardness and elastic strength

- new type of formula, less shrinkage than common C-silicones

COLOUR

white

PACKAGING

06746 jar 900 ml

Suitable catalysts:

SILAPLAST Futur cat f - liquid

INTENDED USE

SILAPLAST Futur – liquid is catalyst liquid suitable for silaplast Futur Putty.



SPECIFICATIONS

- quality catalysts for C-silicones

- with new hardener matrix,

- hypoallergenic, pleasant odour and taste

- blue coloured for exact measuring and mixing control

COLOUR

blue

PACKAGING

06924 bottle 50ml

SILASOFT Normal

INTENDED USE

SILASOFT Normal is correction material, sprayable, for correction impressions (two-step), double-mix technique and anatomic impression (single-step), relining impression.



SPECIFICATIONS

- low consistency – light bodied
- new type of formula
- for correction of preliminary impressions, for the double-impression and double-mix technique
- can be used with catalyst paste cat p universal Futur

COLOUR

rose-opaque

PACKAGING

06751 bottle 160ml

Suitable catalysts:

CAT P UNIVERSAL Futur - paste

INTENDED USE

CAT P UNIVERSAL Futur – paste is catalyst paste suitable for silaplast Futur Putty.



SPECIFICATIONS

- quality catalysts for C-silicones
- new hardener matrix
- hypoallergenic, pleasant odour and taste
- blue coloured for exact measuring and mixing control

COLOUR

blue

PACKAGING

06845 tube 35 ml

BLUE ECO**INTENDED USE**

BLUE ECO is putty for the dental laboratory for versatile use (secure fixation of artificial teeth, precasts, checkbites, models, insulation of teeth in flasking, etc.).

**SPECIFICATIONS**

- addition curing, very high, easily kneadable consistency
- precise detail rendition
- stable in shape and volume, smooth, heat-resistant up to 200 °C
- standard final hardness 86 Shore A
- excellent mechanical properties
- easy to cut
- high economy
- optimum mixing control by contrast colours

COLOUR

Base blue, Catalyst beige 1:1

PACKAGING

- 06952 base jar of 800 g
- catalyst jar of 800 g
- measuring scoops 2 pcs

BLUE ECO STONE**INTENDED USE**

BLUE ECO STONE is laboratory putty, A-silicone based for versatile use (fabrication of precasts, checkbites, models for denture repairs, blockings-out, etc.).

**SPECIFICATIONS**

- high viscosity and smooth initial consistency
- high definition
- dimensionally stable, especially smooth, heat-resistance up to 200 °C
- extra high final hardness, approx. 96 Shore A
- very economical
- easy to cut

COLOUR

Base dark blue, Catalyst white 1:1

PACKAGING

- 06918 base jar of 800 g
- catalyst, jar of 800 g
- measuring scoops 2 pcs

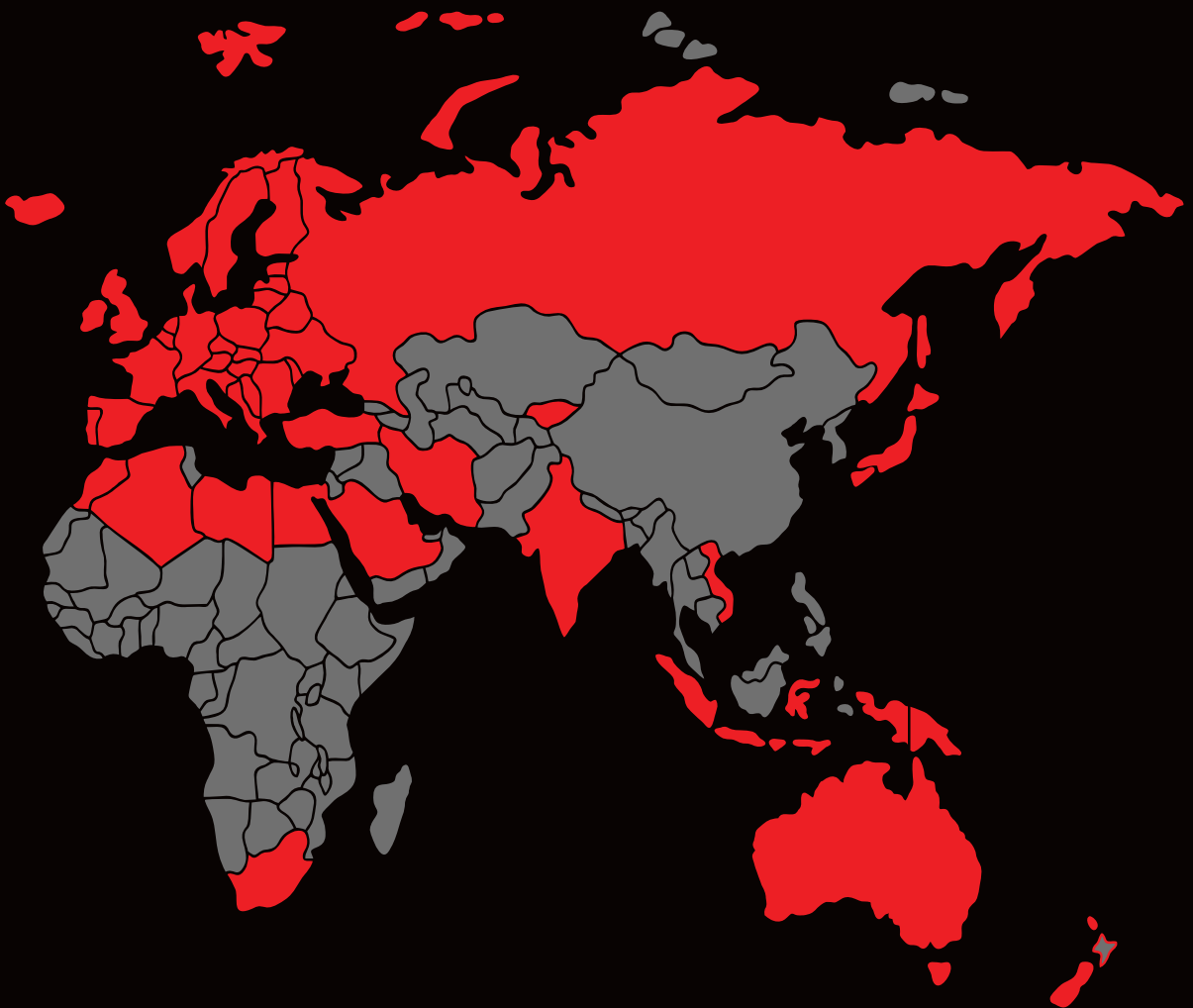
We are selling to ...



ALBANIA
ALGERIA
ARMENIA
AUSTRALIA
AUSTRIA
AZERBEIJAN
BANGLADESH
BELARUS
BELGIUM
BOSNIA & HERZEGOVINA
BULGARIA
CANADA
CHILE
CROATIA
CYPRUS

CZECH REPUBLIC
DENMARK
EGYPT
ESTONIA
FINLAND
FRANCE
GEORGIA
GERMANY
GREECE
GUATEMALA
HUNGARY
ICELAND
INDIA
INDONESIA
IRAN

IRELAND
ITALY
JAPAN
JORDAN
KOSOVO
KUWAIT
KYRGYZSTAN
LATVIA
LEBANON
LITHUANIA
LYBIA
LUXEMBURG
MALTA
MOLDOVA
MONACO



MONTENEGRO
MOROCCO
NETHERLANDS
NEW CALEDONIA
NEW ZEALAND
NORTH MACEDONIA
NORWAY
POLAND
PORTUGAL
REUNION ISLAND

ROMANIA
SAUDI ARABIA
SERBIA
SEYCHELLES
SLOVAKIA
SLOVENIA
SOUTH AFRICA
SPAIN
SWEDEN
SWITZERLAND

TURKEY
UAE
UK
UKRAINE
USA
VIETNAM

... and still looking for new opportunities.



PoliDent
Creating smiles since 1958



PoliDent d.o.o. dental products industry

Volcja Draga 42
5293 Volcja Draga
Slovenia

Tel: + 386 5 330 48 40
www.polident.si
polident@polident.si

Date: 15.06.2026